



Norfolk Square | Brighton | BN1 2PD

£450,000



A lovely two bedroom apartment, nestled within the buzz of Brighton. The property exudes a wealth of natural light and internal space, throughout. Also including both front and rear courtyard.



Key features:

- Front and Rear Gardens
- Two Double Bedrooms
- Share of Freehold
- Original Features
- Central Location

 2 Bedrooms

 1 Bathroom

 1 Living Room

INTERNAL

Occupying the entire lower ground floor of this attractive, well managed period building. The property benefits from good sized rooms, a large hallway, and a lovely layout, all combining to create a real sense of space throughout. The well-presented accommodation comprises; two double bedrooms, bathroom, shower room, semi open plan living space.

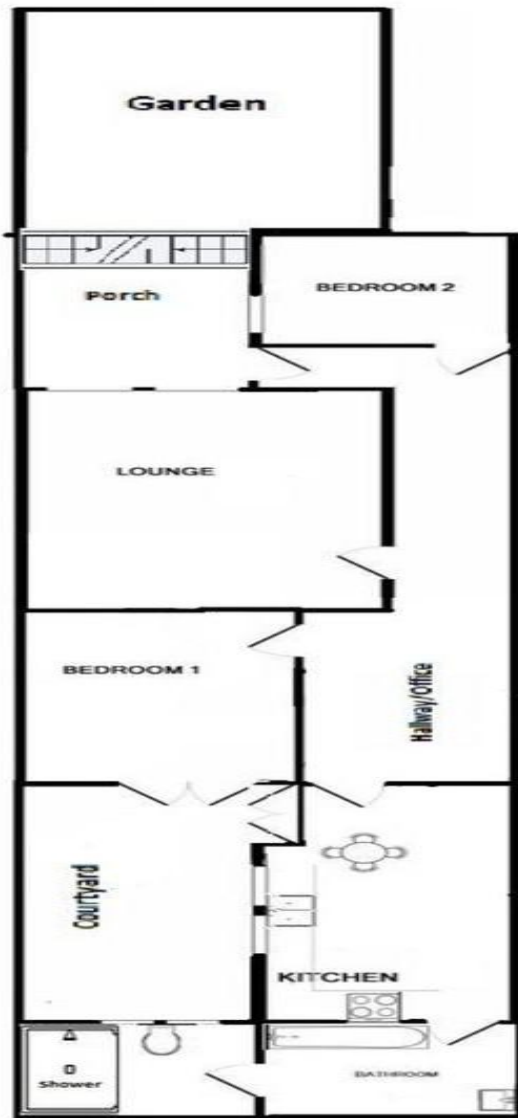
EXTERNAL

There is a private inner courtyard along with a delightful west facing front garden providing plenty of space for table and chairs and the perfect spot to enjoy any afternoon sun. Additional benefits include its own street entrance and a storage room with potential to create further living space

LOCATION

The Norfolk Square is an outstanding conversation area and filled with much of Brighton's famous Regency architecture. With the likes of 'Small Batch' coffee on the corner, with an array of popular pubs and independent restaurants, just a short walk away. The seafront and stretch of Hove Lawns is also just at the end of the road.





%epcGraph_c_1_330%

Property Details:

Tenure: Share of Freehold

Council Tax: Band B

Whilst we endeavour to make our property particulars accurate and reliable, we have not carried out a detailed survey. If there is any point which is of particular importance to you, please contact the office and we will be pleased to check the information for you, particularly if you are contemplating travelling some distance. Whilst every effort has been made to ensure that any floorplans are correct and drawn as accurately as possible, they are to be used for layout and identification purposes only and are not drawn to scale. The services, where applicable, including electrical equipment and other appliances have not been tested and no warranty can be given that they are in working order, even where described in these particulars. Carpets, curtains, furnishings, gas fires, electrical goods/ fittings or other fixtures, unless expressly mentioned, are not necessarily included with the property.